



# OnlyInSouthPark

Newsletter

September 2024

98108

## South Park, Seattle still strong and vibrant

Regardless of the challenges that we as a neighborhood were experiencing, we are convinced that together, this community will continue to grow and be an example to other districts in our beautiful city of Seattle.

Thank you for supporting local businesses and sharing with others about the incredible artists, restaurants, retail, and many other incredible entrepreneurs we have in our neighborhood.



**Seattle Office of  
Economic Development**  
Only in Seattle



# In This Edition



## About Us

Only in South Park is an extension of the Only in Seattle initiative and works in conjunction with The City of Seattle Office of Economic Development, to support and allow small businesses to thrive in the South Park Neighborhood.

Thank you for shop local and support local businesses!

[hello@onlyinsouthpark.org](mailto:hello@onlyinsouthpark.org)

  @onlyinsouthpark

Vision 2045 Airport Plan ... 3

Back to School 2024 ... 6

Hispanic Heritage Month ... 10

Non-Profit of the Month - Monday Reset ... 16

Environmental Justice Fund ... 19

New Businesses in South Park ... 22

Información para la comunidad ... 26

Community Events... 52

South Park Library Updates ... 83

Contact Us ... 87

**OnlyInSouthPark**

# King County International Airport Vision 2045 Airport Plan and Part 150 Study

## King County International Airport is planning for the future.

Learn more about Vision 2045 Airport Plan and Part 150 Study and how to provide your input throughout the planning process.

## You're invited to our Open House!

Learn more about the Part 150 Study purpose and process, meet and talk with the project team, and share your thoughts.

- When: Wednesday, September 4, 2024, 6 - 7:30 p.m.
- Where: KCIA Flight Services Station (6526 Ellis Avenue S)

## About King County International Airport

KCIA is located four miles south of downtown Seattle. Surrounded by vibrant neighborhoods such as Georgetown, South Park, and Beacon Hill, it is one of the nation's busiest non-hub airports.

KCIA accommodates various aviation activities, such as small commercial passenger airlines, cargo carriers, private pilots, corporate jets, helicopters, and military aircraft. Notably, it houses essential facilities, including Boeing Company's 737 Delivery Center and Military Flight Center, and hosts the Museum of Flight



# Vision 2045

## AIRPORT PLAN UPDATE

The Vision 2045 Airport Plan will evaluate how KCIA can evolve and adapt to meet future aviation needs and maintain its status as a world-class airport. This airport planning process will result in an airport plan that will serve airport users and surrounding community members for the next 20 years.

Vision 2045 outlines long-term goals, strategies, and visions for the future of the airport. The plan's goals will encompass the following important categories, listed alphabetically:

- Community engagement
- Efficiency
- Environmental stewardship
- Fiscal sustainability
- Land management
- Operational readiness
- Safety

The plan will provide a roadmap of projects to maintain the airport according to guidance from the Federal Aviation Administration (FAA) and account for potential environmental and socioeconomic impacts.

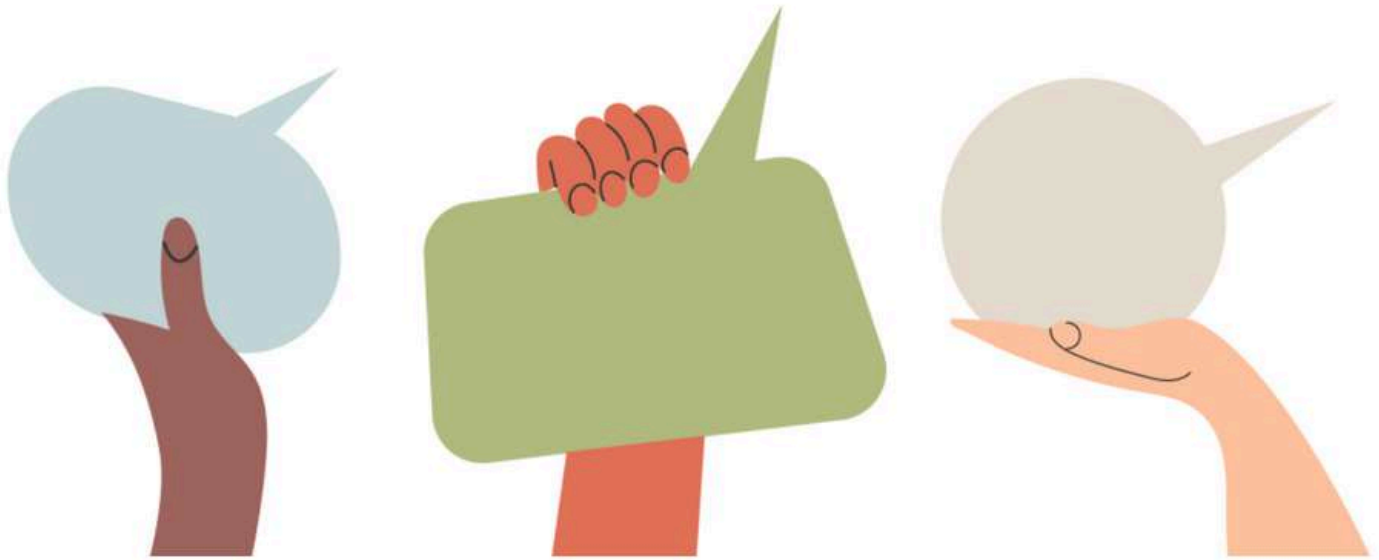
# Part 150 Study

## NOISE AND LAND USE COMPATIBILITY STUDY

The Part 150 Study is a voluntary Federal Aviation Administration (FAA) noise study that King County International Airport (KCIA) is undertaking to measure how much airplane noise is affecting noise exposure for people on the ground. As part of this process, KCIA will study potential processes or programs to address effects of airplane noise. The Part 150 Study will be completed according to FAA guidance and will inform aspects of the Vision 2045 Airport Plan.

The Part 150 Study will include the following:

- Study existing and future flight corridors.
- Develop aircraft noise exposure maps for current and future flight conditions.
- Evaluate air traffic control procedures that could reduce noise exposure over residential areas.
- Consider land use controls that could reduce future incompatible land uses (such as residences, schools, and churches) from being developed within high noise exposure areas.
- Evaluate ways to reduce noise impacts within high noise exposure areas.



## Centering community in the Vision 2045 Airport Plan and the Part 150 Study

KCIA is located near many residential neighborhoods including Allentown, Beacon Hill, Georgetown, Glendale, Rainer Beach, and South Park. Public input is critical to the successful outcome of Vision 2045 and the Part 150 Study. We will ask about important issues like safety, noise, environmental impacts, and use of the airport. Both technical information and community input will inform the plan. KCIA will invite input through committees, surveys, and in-person and online events.

A Project Advisory Committee (PAC) will provide local perspective and technical input for the Vision 2045 Airport Plan and Part 150 Study. The PAC represents city and neighborhood councils, businesses, airport tenants, labor unions, and Federal Aviation Administration and KCIA staff.

KCIA will also use information from the Part 150 Study and the Airport Strategic Plan to inform the Vision 2045 Airport Plan. The Airport Strategic Plan is an opportunity to review KCIA's role in the regional economy and will have a separate community engagement process.

**Contact us at: [KCIACommunityOutreach@kingcounty.gov](mailto:KCIACommunityOutreach@kingcounty.gov).**

**More information at: <https://kciaplanning.com/>**

## You're invited to our Open House!

Learn more about the Part 150 Study purpose and process, meet and talk with the project team, and share your thoughts.

- When: Wednesday, September 4, 2024, 6 - 7:30 p.m.
- Where: KCIA Flight Services Station (6526 Ellis Avenue S)

# Back to School 2024



September 4 is the first day of the 2024-25 school year.  
[View all school year dates.](#)

## *Concord International Elementary*



School Hours: 7:55 a.m. - 2:25 p.m.

Wednesdays: 7:55 a.m. - 1:10 p.m.



Attendance: 206-252-8152

[concord.attendance@seattleschools.org](mailto:concord.attendance@seattleschools.org)



Main Office: 206-252-8100



**Concord  
International  
Elementary**

## Concord

Name:	<b>Concord Elementary School</b>	Enrollment:	334
Address:	722 S Concord Street	Nickname:	none
Configuration:	K-5	Colors:	none
Note:	This information for year 2000-01		



Concord, 2000 ©Mary Randlett SPSA 215-31

The first school in the South Park neighborhood was called South Park School. It was opened in 1902 or earlier and became part of the Seattle School District in 1907.

South Park School sat at the bottom of a hill. A slough immediately adjacent to the school proved to be an irresistible temptation to adventurous boys on their way to school. Many explored it on tipsy rafts and had to explain why they were tardy and dripping wet.

In 1909, the school board purchased another site in the South Park neighborhood, on Concord Street between Seventh and Eighth Avenues S. Three years later, they voted to build a new fireproof brick school there to relieve the overcrowding at South Park School. The new school was named Concord School because it faced Concord Street. This school sat atop a hill. The Concord building was in the Colonial Revival style, identical to McGilvra and McDonald.

On January 25, 1914, some 200-300 of the students at South Park cleared out their desks and, with books and supplies in hand, began the long march to their new school. As they neared their destination, they heard the first streetcar crossing the new bridge across the Duwamish River on Eighth Avenue S.

---

Name: **South Park**  
Location: 12th S between Sullivan  
& Thistle  
Building: 8-room, 2-story wood  
Architect: n.a.  
Site: 0.85 acres

---

ca 1902: Opened  
1907: Annexed into Seattle  
School District  
1914–32: Operated as an annex  
of Concord  
1932: Closed  
1938: Building demolished  
n.a.: Site sold, given or traded to  
parks board  
Present: Site of South Park  
Community Center  
(8319 8th Avenue S)

---

The first recess at the new school was a disaster, for the school ground was a morass of sticky mud. Pupils who played in it soon were unrecognizable and sent home to clean up. Those who ventured off the grounds found they were easily lost in the unfamiliar surroundings of ferns and hazelnut bushes that covered the hillside. The principal, F.C. Jackson, who had been at South Park School, quickly established new rules and regulations.

Concord was transformed from a grade 1–8 school to a K–6 school in 1927–28 with the opening of the combined junior and senior high school at Cleveland. The seventh grade returned for just the 1931–32 year. In September 1932, students from the annex were placed at Concord and South Park was closed. Enrollment peaked in 1958–59 with 516 students.

By 1960, six portables stood on the Concord grounds. A gymnasium and multipurpose room were added in 1971, and the number of portables was reduced to three.

In 1990, a surprise discovery was made when a chalkboard was being removed to install bulletin boards. Beneath the chalkboard was an older blackboard that had been decorated by a sixth grade class in June 1938. Three colored-chalk drawings depicted scenes from Norway, Portugal, and Italy. The six artists signed under the pictures, while the other 20 members of the graduating class signed in lists between the paintings. The discovery led to a reunion event with teachers and some of the students from the 1938 class.

As part of their world cultures program, students built a model Mayan village, learning math, agriculture, government, and fine arts in the process. In fall 1997, Concord became a model school for the Different Ways of Knowing Program that combines social studies and the arts. Its Attic Theater Program brings all students into integrated drama, dance, and cultural studies.

The present-day South Park neighborhood is a multiethnic community by the Duwamish River in an industrial zone. The South Park



South Park, MOHAI 15438



Concord, 1965 SPSA 215-3



Name: **Concord School**  
 Location: 723 S Concord Street  
 Building: 9-room, 3-story brick  
 Architect: Edgar Blair  
 Site: 1.43 acres

1913: Named on February 24  
 1915: Opened on January 25  
 1928: Site expanded to 1.93 acres  
 1945: Site expanded to 3.44 acres  
 1971: Addition (Shavey & Schmidt)  
 1998: 1913 exterior and first floor entrance stairwell designated City of Seattle landmark on February 18  
 1999: Closed for construction



Concord, ca. 1974 SPSA 215-17

Community Center is located on the site of the former South Park School. Concord became an ESL/Bilingual Center in 1996–97, and today over 17 percent of the students are in the ESL program. A high percentage of students at Concord are Hispanic. The school is one of the district's world culture centers and focuses on Latin America.

During the 1999–2000 school year, a major construction project was underway at Concord. The existing facility was partially demolished and renovated, along with construction of an addition (designed by Tsang Partnership) containing a gym/multipurpose room and several classrooms. Students will return to their improved building on the enlarged 4.21-acre site in September 2000 after spending a year at Hughes.



**Concord  
 International  
 Elementary**

723 S. Concord St.  
 Seattle, WA 98108

Main Office: 206-252-8100  
 Fax: 206-252-8101

Attendance  
 Ms. Madi Mittry  
[mmmittry@seattleschools.org](mailto:mmmittry@seattleschools.org)

Mr. Surojit (Suro) Pierce  
 Principal  
[supierce@seattleschools.org](mailto:supierce@seattleschools.org)



# Hispanic Heritage Month



Each year, Americans observe National Hispanic Heritage Month from Sept. 15 to Oct. 15, by celebrating the histories, cultures, and contributions of those whose ancestors came from Spain, Mexico, the Caribbean, and Central and South America.

The day of Sept. 15 is significant because it is the anniversary of independence for Latin American countries Costa Rica, El Salvador, Guatemala, Honduras, and Nicaragua. In addition, Mexico and Chile celebrate their independence days on Sept. 16 and 18, respectively.

“The observation started in 1968 as Hispanic Heritage Week under President Lyndon Johnson and was expanded by President Ronald Reagan in 1988 to cover a 30-day period starting on September 15 and ending on October 15. It was enacted into law on August 17, 1988, on the approval of Public Law 100-402.

“The day of September 15 is significant because it is the anniversary of independence for Latin American countries Costa Rica, El Salvador, Guatemala, Honduras and Nicaragua. In addition, Mexico and Chile celebrate their independence days on September 16 and September 18, respectively. Also, Columbus Day or Día de la Raza, which is October 12, falls within this 30 day period.”

From The American Presidency Project: [Proclamation 10257—National Hispanic Heritage Month, 2021](#): “National Hispanic Heritage Month is an important reminder of how much strength we draw as a Nation from our immigrant roots and our values as a Nation of immigrants. I am proud to recognize my four Hispanic Cabinet Secretaries—Secretary of Health and Human Services Xavier Becerra, Secretary of Homeland Security Alejandro Mayorkas, Secretary of Education Miguel Cardona and Small Business Administrator Isabel Guzman—who are all leading executive departments that oversee critical components of American life.”

- **September 15th:** Costa Rica, El Salvador, Guatemala, Honduras, and Nicaragua
- **September 16th:** Mexico (*El Grito de Dolores*)
- **September 18th:** Chile (*Dieciocho*)
- **September 21st:** Belize

Additional dates to know include **September 23rd**, which is the anniversary of *El Grito de Lares*, Puerto Rico’s first revolution for independence in 1868.



Costa Rica



El Salvador



Honduras



Mexico



Guatemala



Nicaragua

# Fiestas Patrias South Park Parade



Fiestas Patrias is a community festival celebrating the independence of Latin America countries and the Latino heritage, arts, and culture. The fiesta takes place in Seattle's South Park neighborhood (Saturday 9/14) and at Seattle Center (Saturday and Sunday 9/14 - 9/15).

South Park Parade & Community Festival: South Park (Saturday only): Watch the parade make its way through 14th Avenue and Cloverdale Street with your family, then head over to the South Park Community Center for the health fair and festival.

Seattle Center (Saturday & Sunday): Experience the live performances of traditional Latino dances, music, food and art under the Space Needle. Sea Mar Fiestas Patrias in Seattle Center is hosted in partnership with Seattle Center Festál.



# UNIFYING OUR COMMUNITIES



**Parade, Music, Food, Health Fair, Festival  
Dancing, Art Exhibition, Zumba® and Children's Activities**

Seattle Center - Festivities	September 14   1:00 p.m. - 9:00 p.m.
	September 15   11:00 a.m. - 6:00 p.m.
South Park - Parade	September 14   10:00 a.m. - 1:00 p.m.

[www.seattlefiestaspatrias.org](http://www.seattlefiestaspatrias.org)




 @seamarchc





# WASHINGTON CLEAN ENERGY CREDITS

Find out if you qualify for a \$200 credit towards your Seattle City Light bill.



Seattle City Light



We're providing a \$200 bill credit to income-qualified customers through the Washington State Climate Commitment Act.

Find out more at <https://citylight.seattle.gov/WACleanEnergyCredits>

**Act now! Funding is limited and credits are only available until September 15, 2024.**



## Washington Clean Energy Credits

### You may qualify for a \$200 utility bill credit!

Seattle City Light is providing a one-time \$200 WA Clean Energy Credit to income-qualified residential customers through the Washington State Climate Commitment Act.

Act now! Funding is limited and credits are only available until September 15, 2024. To apply:

- Visit [WACleanEnergyCredits.com](http://WACleanEnergyCredits.com); or
- Call 1-844-941-2939 (Monday through Friday; 8 a.m. to 5 p.m.)

### Who qualifies for the credit?

The WA Clean Energy Credit is available to income-qualified individuals; families (with or without children); and households with multiple, unrelated renters. It is limited to one per customer account. City Light residential customers qualify if their total pre-tax household income in 2023 was at or below:

- 1 person: \$77,700
- 2 people: \$88,800
- 3 people: \$99,900
- 4 people: \$110,950
- 5 people: \$119,850
- 6 people: \$128,750
- 7 people: \$137,600
- 8 people: \$146,500

City Light will automatically apply the credit to customer accounts that have received energy assistance or another income-qualified program. Customers who automatically receive the credit will receive a text to confirm they are qualified to receive the credit. They will also receive a notice that they were approved if they try to apply for the credit. We may adjust qualifications or increase the income limits based on funding availability.

---

# Monday Reset

---

[eventbrite.com/o/the-reset-seattle-80194830583](https://eventbrite.com/o/the-reset-seattle-80194830583)

---



Non-profit organizations are the gems in our community because they spend their energy, time and resources to create a better life for us and everyone around us. That's why we've decided to do a small part by featuring them in our newsletter. We have chosen Monday Reset. Let's get to know them better.

"Join a creative community where you can share your ideas, learn from others, and collaborate with local talent. Be part of a supportive group that loves to connect, all while enjoying great coffee from our local favorite, The Scene Coffee Shop."

Catch The Reset Seattle at The Scene in South Park for another MONDAY RESET to close out September on 9/30 @ 5 p.m.

The Scene in South Park  
1249 S Cloverdale St,  
Seattle, WA 98108







Monday Reset at The Scene, is a recurring evening meet up for creatives, hobbyist, entrepreneurs, or 9-to-5ers looking for a third place to get things done.

Start your week off right with dedicated 'focus time' outside of home/the office to work on just about anything: side hustles, lingering work, catching up on a book, client management, or house keeping.

Join in for good vibes, ambient music, and food and drink for purchase. This in-person event is the perfect way to reset and organize for the month ahead individually but in a group.

Don't miss out on this opportunity to unwind and connect with like-minded individuals. Due to capacity of the venue, space is limited to ensure everyone can work comfortably.

Your ticket includes a \$5 credit to use at The Scene for food and drinks on the evening of the event.

All ticket sales are final.

## These are the frequently asked questions

*This is an event where I can bring my computer or notebook and just work on whatever?*

Yes. Many events in the city are geared towards networking or entertainment and each is important for our community. This event is filling in a gap we see: We are creating a third space where in the evening, folks can gather because sometimes you just need to leave the house to work on your craft.

*Can I have a group meeting here?*

The majority of the event will be relatively quiet to allow for dedicated focus time. Quiet discussion is all good - just don't disturb anyone else.

*Will I get a chance to connect with other hobbyists, entrepreneurs, or professionals?*

Sure! Arrive early to set up shop and connect with other folks who are joining in on the event. Hang back afterwards to chat further before doors close at 8 PM

### **For more information, feel free to contact:**

Michelle Dean,  
Lead Creative at The Reset Seattle  
hello@bonhomicreative.co



@theresetseattle



eventbrite.com/o/the-reset-seattle-80194830583

## Seattle Office of Arts & Culture Grant

# Hope Corps 2025

Envisioned as an economic recovery program for Seattle's creative workforce, Hope Corps seeks to connect under- and unemployed artists and creative workers with career opportunities that benefit the public. The 2025 Hope Corps program is part of Mayor Bruce Harrell's Downtown Activation Plan, and funding will go towards projects that employ creative workers through activations in Seattle's downtown neighborhoods.



Due: Sept. 3, 2024, 5 p.m. (Pacific)



Apply for \$5,000 - \$50,000



Apply at [seattle.gov/arts](https://seattle.gov/arts)



OFFICE OF ARTS & CULTURE  
SEATTLE

Contact: Alex Rose  
[Alex.Rose@seattle.gov](mailto:Alex.Rose@seattle.gov)  
(206) 459-6517

Envisioned as an economic recovery program for Seattle's creative workforce, Hope Corps seeks to connect under- and unemployed artists and creative workers with career opportunities that benefit the public. Grants range from \$5,000 - \$50,000 to support creative worker wages and project expenses.

Learn more: [seattle.gov/arts/programs/grants/hope-corps](https://seattle.gov/arts/programs/grants/hope-corps)

Due Tuesday, Sept. 3, 5 p.m. (Pacific)

**NOW ACCEPTING APPLICATIONS**

# *Environmental Justice Fund*

Seattle's 2024  
Environmental  
Justice Fund is now  
accepting  
applications!

More information in  
next page



[SEATTLE.GOV/ENVIRONMENT/EJFUND](https://seattle.gov/environment/ejfund)



City of Seattle OSE is excited to announce that the 2024 Environmental Justice (EJ) Fund is now live!

The EJ Fund supports projects that benefit Seattle communities most affected by environmental and climate inequities.

Applicants – Tribes, tribal organizations, nonprofits, and community groups – can apply for either a \$10,000 grant, or a \$25,000 grant



**APPLY EARLY!**

**Amounts:** Either a \$10,000 or \$25,000 grant

**For:** Projects benefiting communities most affected by environmental and climate issues, including Black, Indigenous, People of Color, immigrants, refugees, people with low incomes, youth, and elders.

**Apply by:** Applications will be accepted and reviewed on a rolling basis until the total funding is awarded or until 5pm on October 20, 2024 — whichever comes first.

[SEATTLE.GOV/ENVIRONMENT/EJFUND](https://seattle.gov/environment/ejfund)



This year, there is a total of \$250,000 in funding available.

Applications will be accepted and reviewed on a rolling basis until all funding is awarded, or **until 5pm on October 20th** -- so we encourage you to apply early

Learn more and start your application at [seattle.gov/environment/ejfund](https://seattle.gov/environment/ejfund).

# South Park CC @ Concord Fall Drop-In Programs



There will be a variety of FREE drop-in programs and activities happening at Concord International School while South Park Community Center is under renovation!

**Fall 2024 FREE Drop-In Programs at Concord. Sept 9th – Dec 31st**

More information visiting <https://parkways.seattle.gov/2024/08/23/south-park-cc-concord-fall-drop-in-programs/>



## Welcome El Rey Peruvian Restaurant to South Park!

8515 14th Ave S,  
Seattle WA 98108



A good introduction to Peruvian food for newbies, El Rey serves Lima staples from stir-fried steak with fries and rice (lomo saltado) to the creamy potato (papa a la huancaína) along with excellent fried fish and roast chicken. Wash these dishes down with an Inca Kola or a pitcher of chicha morada, a purple corn drink.

Stay tuned for the official opening day.



## **Welcome El Herradero Mexican Restaurant to South Park!**

8709 14th Ave S,  
Seattle, WA 98108

Opens every day, on average from 10:00 AM - 9:00 PM providing authentic Mexican food. Stop by and try it today.

Phone: (206) 257-5355



## Welcome Canela Mexican Café to South Park!

8526 14th Ave S,  
Seattle, WA 98108



Canela serves high quality coffee, beverages, and food that celebrates Mexican culture; supports employee growth and community connection; and provides an environment where all are welcome.

Melissa Quezada, founder and owner (a.k.a. La Jefa), is a proud Mexican-American who set out to create a gathering place that celebrates Mexican culture.

Through all the month of September come to fulfill all your Mexican coffee and churro dreams! Come and get your cafe de olla, mocha Mexicana, horchata, and MUCH MUCH MORE!

Average hours goes Monday - Saturday from 8:00 AM - 1:00 PM

For more updates follow @canelamexicafe



### POZOLE

Cebolla,lechuga,rabano,  
orégano,limon,40 tostadas,  
10 sodas.

=139=

### BIRRIA EN CALDO

Cebolla,cilantro,,limon,  
40 tortillas,10 sodas.

=139=



### MENUDO

Cebolla,orégano,chiles.  
40 tortillas,10 sodas,  
limon.

=139=

### CALDO DE RES

Cebolla,cilantro,,limon,  
salsa, 40 tortillas,10 sodas,.

=139=



## 10 PORCIONES

### CARNITAS

Rajas,cebolla,cilantro,  
limon,salsa,40 tortillas,  
10 sodas, arroz y frijol.

=139=

### MILANESA DE RES O POLLO

Ensalada de lechuga ,limón,salsa,  
40 tortillas,10 sodas, arroz y frijoles

=139=

### TACOS ( ORDEN DE 3 )

#### Al pastor

#### Asada o pollo

Rajas,cebolla asada,chiles  
toreados ,cilantro,limón,  
arroz y frijol

=139=



### FAJITAS DE RES O POLLO

Salsa,rajas,cebolla,  
cilantro, limón, 40 tortillas,  
10 sodas, arroz y frijol

=139=

### TINGA DE POLLO

Ensalada de lechuga ,limón,salsa,  
40 tostadas,10 sodas, arroz y frijoles

=139=

### BURRITO

#### Al pastor

#### Asada o pollo

#### Carnitas

Pico de gallo,queso,salsa,crema,  
10 sodas, arroz y frijoles

=129=

### TORTA CUBANA

Pierna,milanesa,chorizo,  
salchicha,tocino,jamon,queso,  
huevo,frijol,mayonesa,jitomate,  
aguacate,cebolla,chile,

10 sodas

=159=



**HAZ TU PEDIDO UN DIA ANTES  
AL TEL. 206-712-3941**

## Welcome Chilangolandia to South Park!

8525 14th Ave S, Seattle, WA 98108 - Parking lot  
Every day from 5:00 PM - 11:00 PM

# Información para la comunidad

## Cultivate South Park / Urban Fresh Collective

Distribución de comida todos los martes y el 1er y 3er viernes de cada mes de 12:30 a 2:00 p.m.

Además, los viernes en Casa del Rio de 1:30 p.m. a 2:30 p.m. ubicado en 614 S Riverside Dr. Seattle, WA 98108.

Todas estas o cualquier otra situación de emergencia de alimentos puede comunicarse con Mónica Pérez al (206) 731-9937 / [monica@cultivatesouthpark.org](mailto:monica@cultivatesouthpark.org) para más información.



Villa Comunitaria tuvo una muy exitosa feria de recursos de El Día de la Familia en meses anteriores, con cientos de personas que vinieron a disfrutar de un día en familia con actividades, organizaciones, comida, música y diversión.

Más de 30 organizaciones compartieron información acerca de sus programas, tuvieron un área para tomar fotos, demostraciones de CPR, arte, un equipo de intérpretes y mucho más!

Estamos muy afortunados por el trabajo de su equipo y voluntarios, y agradecidos de que continúen apoyando a la comunidad.

8201 10th Ave South, Ste. 8,  
Seattle WA 98108

Tel: (206) 767-7445  
E: [Info@villacomunitaria.org](mailto:Info@villacomunitaria.org)

# Ayúdenos a planificar el futuro del Aeropuerto Internacional del Condado de King

El Aeropuerto Internacional del Condado de King (KCIA) está llevando a cabo dos estudios importantes para planificar el futuro del aeropuerto: el Plan del Aeropuerto Vision 2045 y el Estudio Parte 150. El Condado posee y opera KCIA, un aeropuerto de uso público que forma parte del Plan Nacional de Sistemas Aeroportuarios Integrados (NPIAS). Tanto el condado de King como la Administración Federal de Aviación (FAA) tienen autoridad sobre diferentes partes de las operaciones, la gestión y el desarrollo futuro del aeropuerto.

## Vision 2045

### AIRPORT PLAN UPDATE

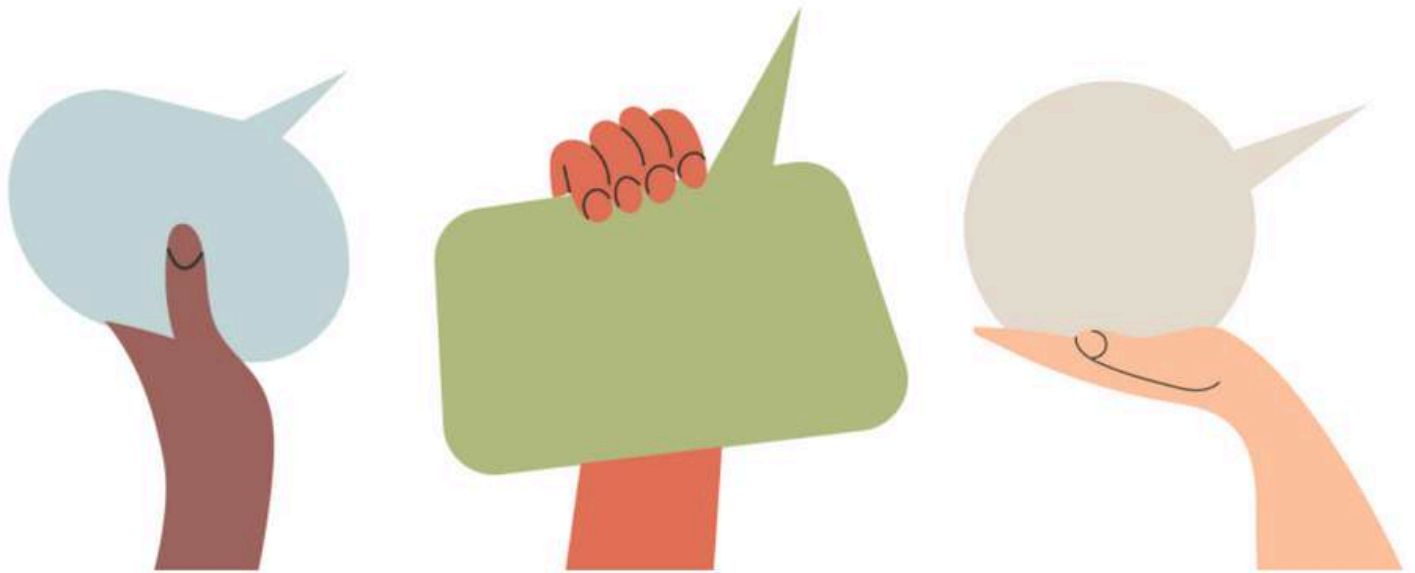
El Plan Aeroportuario Visión 2045 evaluará cómo KCIA puede evolucionar y adaptarse para satisfacer las necesidades futuras de la aviación y mantener su estatus como aeropuerto de clase mundial. El Plan Aeroportuario Visión 2045 identificará proyectos que KCIA implementaría para continuar operando de manera segura y eficiente y al mismo tiempo satisfacer la cambiante demanda de la aviación. Visión 2045 seguirá la orientación de planificación de instalaciones a largo plazo de la FAA y también tendrá en cuenta los posibles impactos ambientales y socioeconómicos.

## Acerca del Aeropuerto Internacional del Condado de King

KCIA está ubicada a cuatro millas al sur del centro de Seattle. Rodeado de vecindarios vibrantes como Georgetown, South Park y Beacon Hill, es uno de los aeropuertos no centrales más transitados del país.

KCIA se adapta a diversas actividades de aviación, como pequeñas aerolíneas comerciales de pasajeros, transportistas de carga, pilotos privados, aviones corporativos, helicópteros y aviones militares. En particular, alberga instalaciones esenciales, incluido el centro de entrega 737 y el centro de vuelo militar de Boeing Company, y alberga el Museo de Vuelo.





## Centrando a la comunidad en el Plan Aeroportuario Visión 2045 y el Estudio Parte 150

KCIA está ubicada cerca de muchos vecindarios residenciales, incluidos Allentown, Beacon Hill, Georgetown, Glendale, Rainer Beach y South Park. La opinión del público es fundamental para el resultado exitoso de Visión 2045 y el Estudio de la Parte 150. Preguntaremos sobre temas importantes como seguridad, ruido, impactos ambientales y uso del aeropuerto. Tanto la información técnica como los aportes de la comunidad informarán el plan. KCIA invitará a realizar aportaciones a través de comités, encuestas y eventos en persona y en línea.

Un Comité Asesor del Proyecto (PAC) proporcionará una perspectiva local y aportes técnicos para el Plan Aeroportuario Visión 2045 y el Estudio de la Parte 150. El PAC representa a consejos municipales y vecinales, empresas, inquilinos de aeropuertos, sindicatos y personal de la Administración Federal de Aviación y de la KCIA.

KCIA también utilizará información del Estudio de la Parte 150 y el Plan Estratégico del Aeropuerto para informar el Plan Aeroportuario Visión 2045. El Plan Estratégico del Aeropuerto es una oportunidad para revisar el papel de la KCIA en la economía regional y tendrá un proceso de participación comunitaria separado.

### ¡Estás invitado a nuestra jornada de puertas abiertas!

Obtenga más información sobre el propósito y el proceso del Estudio de la Parte 150, conozca y hable con el equipo del proyecto y comparta sus ideas.

- Cuándo: miércoles 4 de septiembre de 2024, de 18:00 a 19:30 horas
- Dónde: Estación de servicios de vuelo de KCIA (6526 Ellis Avenue S)



# River Access Paddle Programs 2024



## Eventos de recolección de basura del río Duwamish:

11 de Febrero

24 de Marzo

20 de Abril

29 de Junio

## Cursos para ser

guia turistico

sobre el rio:

18-19 de Mayo

1-2 de Junio

8 y 9 de Sept.



R.A.P.P. trabaja con las comunidades del río Duwamish para crear más acceso al río y al mar Salish. También para apoyar la salud. de la comunidad, la educación y conciencia sobre el único río de Seattle. El apoyo a RAPP fue proporcionado por el fondo de oportunidades del río Duwamish de la ciudad de Seattle y el fondo de mitigación y administración de Pudget Sound. Un fondo creado por Pudget Soundkeeper Alliance y administrado por la fundación Rose para las comunidades y el medio ambiente.

## Recorridos

educativos:

28 de Julio

12 de Agosto

21 de Sept.



RSVP





# Jardín Infantil

Cooperativa Preescolar

**REGISTRESE HOY**  
programa de  
alta calidad  
gratis



**REGISTRO ABIERTO**

para niños de 0 a 5 años



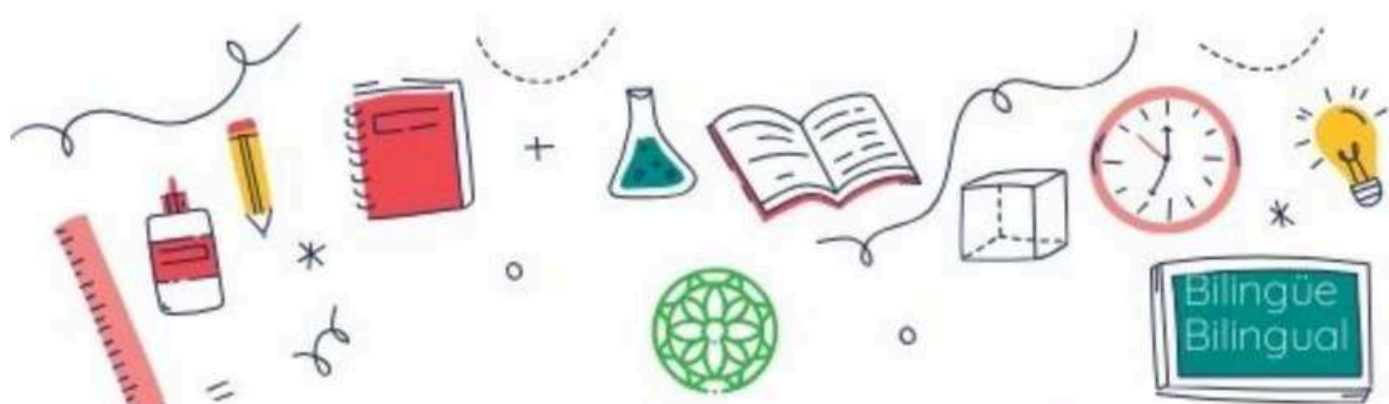
## **BENEFICIOS DE UNA COOPERATIVA PREESCOLAR :**

- Escuela de Padres
- Conexiones & Recursos
- Valores Latinos
- Comunidad



[VillaComunitaria.org](http://VillaComunitaria.org)

206 702 7072 / 206 867 3132  
[early.learning@villacomunitaria.org](mailto:early.learning@villacomunitaria.org)



# Caleidoscopio

Jugar y Aprender / Play & Learn

Lugar para cuidadores y padres de familia, amigos y vecinos con niños de 0 a 5 años a su cuidado para obtener información, recursos, apoyo y conexiones.

*A place for caregivers and parents, friends, and neighbors with children ages 0-5 in their care to get information, resources, support, and connections.*

## Días de encuentro:

**Lunes/ Mondays**

**10:00 - 11:30 am**

**Inicio: Sep 9**

Biblioteca Pública de Seattle,

**Sede Delridge**

*Seattle Public Library, Delridge Branch*

5423 Delridge Way S.W., Seattle, WA 98106

**Miércoles/ Wednesdays**

**10:00 - 11:30 am**

**Inicio: Sep 4**

Biblioteca Pública de Seattle,

**Sede South Park**

*Seattle Public Library, South Park Branch*

8604 8th Ave. S., Seattle, WA 98108

**NO REQUIERE REGISTRO NO REGISTRATION REQUIRED**



Programa facilitador por:

Villa Comunitaria



Más información More information

(206) 702 7072 - (206) 867 3132 - [laura@villacomunitaria.org](mailto:laura@villacomunitaria.org)

# ENTRENAMIENTO PRACTICAS DE LIMPIEZA SEGURA, SEGURIDAD Y DERECHOS DE TRABAJADORES



¿Sabes cómo mantenerte seguro/a mientras usas productos de limpieza?

Villa Comunitaria en colaboración con Casa Latina, les trae e invita a este entrenamiento donde aprenderá:

- Practicas seguras de limpieza y de productos seguros.
- Eliminación apropiada de residuos peligrosos.
- Recetas seguras para limpiar.
- Importancia de un hogar con un ambiente saludable.
- Postura adecuada para evitar lesiones y caídas.
- Tus derechos como trabajador

**Fecha:**

**Martes 15 de agosto  
de 4:30 pm-7:30 pm  
en Villa Comunitaria  
8201 10th ave s, seattle, wa  
98148**

**Los participantes se llevaran:  
Un kit de limpieza, artículos de  
protección: guantes, mascarillas,  
googlees y un certificado de  
cumplimiento del entrenamiento  
por parte de Casa Latina.**

**REGISTRATE**



← Escanea el código o comuníquese al 206-819-3083 con Monica Salmoran o al 206-741-2789 con Manuel Perez

Villa  
Comunitaria



Salud Pública  
Seattle y el condado de King





# Regreso a clases 2024



**El 4 de septiembre es el  
primer día del año escolar  
2024-25.**



**Concord  
International  
Elementary**

723 S. Concord St.  
Seattle, WA 98108

Oficina: 206-252-8100



Director:: Surojit (Suro) Pierce  
[supierce@seattleschools.org](mailto:supierce@seattleschools.org)



## CRÉDITO DE ENERGÍA LIMPIA EN WASHINGTON

¡Podría calificar para un crédito de \$200 en su factura de City Light!

**Estamos ofreciendo un crédito único de \$200 del Programa de Energía Limpia de Washington a los clientes residenciales de Seattle City Light que cumplan los requisitos de ingresos a través de la Ley de Compromiso Climático de Washington.**

¡Actúe ahora! La disponibilidad de fondos es limitada y los créditos estarán disponibles solo hasta el 15 de septiembre de 2024. Se otorga un crédito por cada hogar que reúna los requisitos.

Para hacer su solicitud, entre a [WACleanEnergyCredits.com](http://WACleanEnergyCredits.com) o llame al 1-844-941-2939 De lunes a viernes, de las 8 a. m. a las 5 p. m.



Para más información, visite:  
[citylight.seattle.gov/WACleanEnergyCredits](http://citylight.seattle.gov/WACleanEnergyCredits)



*El Programa de Créditos de Energía Limpia para Familias de Washington se financia con fondos de la Ley de Compromiso Climático de Washington. La Ley de Compromiso Climático (CCA) apoya los esfuerzos de acción climática de Washington al utilizar fondos de límite e inversiones para reducir la contaminación climática, crear empleos y mejorar la salud pública. Para más información sobre la CCA, visite [www.climate.wa.gov](http://www.climate.wa.gov).*

## ¿Quién califica?

Los clientes residenciales de Seattle City Light reúnen los requisitos si los ingresos totales anuales antes de impuestos de su hogar en 2023 fueron iguales o inferiores a:

TAMAÑO DEL HOGAR	INGRESOS FAMILIARES ANUALES - 80% AMI
1	\$77,700
2	\$88,800
3	\$99,900
4	\$110,950
5	\$119,850
6	\$128,750
7	\$137,600
8	\$146,500

*\*Podríamos ajustar los requisitos o aumentar los límites de ingresos según la disponibilidad de fondos.*

## Cómo hacer su solicitud:

¡Solicitar el crédito es rápido y fácil, y no necesita enviar documentos! Para completar la solicitud en línea o por teléfono, necesitará saber:

1. Su proveedor de servicios de electricidad (Seattle City Light)
2. Su número de cuenta de Seattle City Light
3. El código postal de su dirección de facturación
4. El condado en el que se encuentra su vivienda (Condado de King)
5. El número de personas en su hogar
6. El ingreso total anual del hogar antes de los impuestos del último año (2023)

## Cómo encontrar su número de cuenta de Seattle City Light:

1. Consulte su factura de Seattle City Light
2. Inicie sesión en su perfil en el sitio web de servicios públicos en <https://myutilities.seattle.gov>
3. Llame al Centro de Servicio al Cliente al (206) 684-3000 (servicios de interpretación disponibles)



Más información en: [citylight.seattle.gov/WACleanEnergyCredits](https://citylight.seattle.gov/WACleanEnergyCredits)

## Asistencia lingüística disponible:

- Español (Spanish)
- 한국어 (Korean)
- العربية (Arabic)
- 正體字 (Chinese, traditional)
- አማርኛ (Amharic)
- Afaan Oromoo (Oromo)
- Tiếng Việt (Vietnamese)
- Русский язык (Russian)
- हिन्दी (Hindi)
- Af-Soomaali (Somali)
- 日本語 (Japanese)
- Français (French)
- Tagalog (Tagalog)
- ትግርኛ (Tigrinya)
- Українська мова (Ukrainian)



# CONOCE CÓMO PEDIR CAPITAL PARA TU NEGOCIO



**SOUTH PARK HALL**  
1253 S Cloverdale St  
Seattle, WA 98108



**JUEVES,**  
**5 DE SEPTIEMBRE, 2024**



**4:30 PM - 6:00 PM**

## MÁS INFORMACIÓN:

Mónica Pérez  
(206) 731-9937

**¡VAMOS!**



**Adriana Ramirez**

Asesora bancaria de Banner Bank

**OnlyInSouthPark**



Seattle Office of  
Economic Development

**¡Reserva la fecha!**

# Tierra y Tradición

**Celebrando la Semana de la Conservación Latina con ECOSS y GSP**

**Sábado 21 de septiembre  
10 a.m. a 2 p.m. en Seward Park**

**Únase a nosotros para restauración de hábitat, una caminata guiada para observar aves, una búsqueda del tesoro y actividades artísticas y creativas. se proporcionará comida**



Celebre la Semana de la Conservación Latina. ¡Aquí te dejamos algunas de las actividades que tendremos para que disfrutes!

Paseo de aves / Restauración del hábitat / Búsqueda del tesoro  
Impresión de flores y fabricación de bolas de semillas. / Almuerzo  
Lotería / Sorteos / Juegos de césped.

Regístrese usando el código de arriba.

# DOMINGOS DE BICIS Y SCOOTERS

¡Acompáñenos para paseos gratuitos en scooter, bicicleta y ciclismo adaptado por Lake Washington Boulevard!



**11 de agosto**

Parque Seward

## Horario diario

**De 10 a. m. a 2 p. m.:**

Paseos gratis en bicicletas adaptadas de Access Outdoors for All

**22 de septiembre**

Parque Genesee

Aprenda a usar de forma segura los scooters y bicicletas compartidos con Bird y Lime

**De 12 a 2 p. m.:**

Disfrute de la comida de Nacho Rio Food Truck



Para más información, escanee el código QR o visite [seattle.gov/ScooterShare](http://seattle.gov/ScooterShare)



**Seattle**  
Department of  
Transportation



# ¡Plante un árbol y contribuya al crecimiento del bosque urbano de Seattle!

Con el programa  
**Árboles para Vecindarios,**

puede recibir hasta 3 árboles gratis para plantar en su jardín o en la vía pública.

**Solicitar su árbol gratuito hoy mismo**

*Las solicitudes están abiertas*



[seattle.gov/trees/trees-for-neighborhoods](http://seattle.gov/trees/trees-for-neighborhoods)



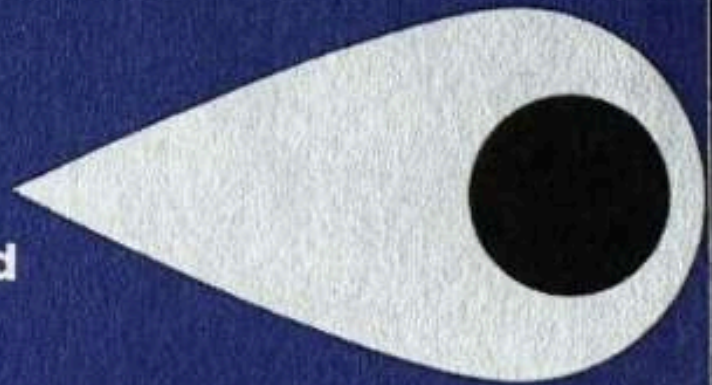
# **VIGILANCIA de la VECINDAD SOUTH PARK**

¡Únase a sus vecinos para hacer de South Park un lugar más seguro y acogedor para vivir! Este programa ayudará:

- Construir conexiones comunitarias
- Enseñar prácticas de seguridad personal
- Reducir los delitos menores/molestos
- Mejorar las relaciones con las autoridades

**Gerard Miller**  
Public Safety Coordinator  
Seattle Neighborhood Group

[gerard@sngi.org](mailto:gerard@sngi.org) | 206-322-9330





# Salud Conductual

- Evaluaciones de salud mental
- Terapia Individual
- Terapia de grupo
- Terapia familiar y mucho más

Dirección  
8615 14th Ave. South  
Seattle, WA 98108

Teléfono  
(206)461-4880

[consejocounseling.org](http://consejocounseling.org)



## Programa de asistencia técnica para pequeños negocios y emprendedores

La Oficina de Desarrollo Económico ofrece servicios de apoyo para los emprendedores en nuestra área de diferentes industrias con apoyo gratuito de consultoría empresarial y contabilidad.

Recientemente esta oficina aprobó a una contadora de habla hispana a dar apoyo totalmente gratis hasta 8 horas de apoyo sin costo alguno para el dueño de negocio o emprendedor.

**Puedes contactarla directamente llamando al teléfono (425) 435-8907 su nombre es Vanesa Medina o por correo a: [MedzamConsulting@Gmail.com](mailto:MedzamConsulting@Gmail.com)**

Para más información comunícate con nosotros a [hello@OnlyInSouthPark.org](mailto:hello@OnlyInSouthPark.org)





**CONSEJO**  
Counseling and Referral Service

# **GRUPO PARA MUJERES**

## **Sobrevivientes de Abuso Sexual**

**(8 semanas)**



**JUNTAS  
SOMOS MAS FUERTES**

**Consejo te ofrece un espacio confidencial para compartir y  
expresar tus emociones libremente  
Hablaemos de temas como trauma, emociones,  
autoestima y mas**

**NO estas sola**

**Reuniones Dias Lunes**

**Hora 10AM a 12PM**

**Iniciamos Lunes 9 de Septiembre**



**Llamanos!**  
**206-461-4880**



# RECORRIDO A PIE: **POR EL** **PARQUE DEL PUEBLO DEL RIO** **DUWAMISH Y HABITAT** **RIBEREÑO:**

**Fechas de Septiembre: 09/09, 09/12, 09/16,  
09/19, 09/23 y 09/30 llegar a las 4:30 PM**

**Duwamish River Community Hub,  
8600 14th Ave S, Seattle, WA 98108**

¡Ven y aprende sobre la historia del río Duwamish, la restauración del hábitat, los esfuerzos de limpieza y más!

*Se proporcionan bocadillos ligeros.*

**Regístrate con:  
Jeraldi Gonzalez  
(206) 858-3381**





# hora de cuentos

y más

¡Empieza el  
10 de  
septiembre!



## ¡La hora de cuentos en español!

Los niños y sus familias están invitados a participar en cuentos, canciones, juegos y diversión en español. Los programas de la biblioteca son gratuitos.

**Sucursal de South Park**  
8604 8th Ave. S., Seattle

**Los martes a las 6:30 p.m. de la tarde.**

(This event is in Spanish.)

[www.spl.org](http://www.spl.org) | 206-615-1688



student success

Join us for  
**FUN &  
LEARNING**  
at the Library



# Homework Help

at The Seattle Public Library

**Biblioteca de  
South Park**  
miércoles  
3:30 PM-5:30 PM

**Ayudamos a estudiantes de  
todas las edades tener éxito en  
la escuela.**

- Ayuda con tarea escolar
- Mentoría académica
  - Tutoría individual
- Juegos y actividades de desarrollo de habilidades
  - Leer con un tutor

Learn more at [www.spl.org/StudentSuccess](http://www.spl.org/StudentSuccess)

# ¡Apoya a las Agricultoras!

¡Únete a nuestra Comunidad de Agricultura Compartida!

## Cajas de Vegetales orgánicos y frescos

Disfruta de 18 semanas de vegetales cultivados en South Park.



**Suscríbete**  
**\$40**  
**Semanales**

Empieza: Junio 18 - Termina: Octubre 15, 2024

Recoger de 3:00 PM - 5:00 PM

Todos los **Martes!**

Lugar: 9026 4th Ave S, Seattle, WA 98108

  
Villa  
Comunitaria

Salsa de la Vida es un programa de Villa Comunitaria dirigido por mujeres

Regístrate  
aquí!



Para más información:  
(206)-496-2697  
diana@villacomunitaria.org



SALSADLAVIDA\_



¡Estamos contentos de anunciar que la OCTAVA edición del MEXAM Northwest Festival curado por Consulado de México en Seattle una auténtica celebración de la rica cultura México-Americana, está a punto de comenzar!



RELACIONES EXTERIORES  
SECRETARÍA DE RELACIONES EXTERIORES

MÉXICO  
CONSULADO DE MÉXICO EN SEATTLE

# ¿Vas a tramitar algún documento oficial en Estados Unidos?

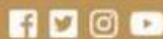


## Conserva tu identidad

Recuerda mantener tu nombre tal y como está registrado en tu acta de nacimiento mexicana, no permitas que alguno de tus apellidos sea registrado como tu segundo nombre o middle name ya que esto cambia tu identidad.

Conserva tus dos apellidos, de esta forma evitarás problemas si presentas tus documentos para realizar trámites en Mexico.

RELACIONES EXTERIORES  
SECRETARÍA DE RELACIONES EXTERIORES



[consulmex.sre.gob.mx/seattle](http://consulmex.sre.gob.mx/seattle)

¡Importante! 🚨 Protege tu Identidad en Estados Unidos 🇲🇽🇺🇸

¿Vas a tramitar algún documento oficial en Estados Unidos? Recuerda mantener tu nombre tal y como está registrado en tu acta de nacimiento mexicana.

📌 **No permitas que tus apellidos se conviertan en tu segundo nombre o middle name.** Esto puede generar problemas de identidad.



# ALERTA

## No te dejes engañar



Las citas para servicios consulares de Pasaporte, Documento Personal de Identificación -DPI-, Tarjeta de Identificación Consular Guatemalteca -TICG- y Certificado de Nacimiento **son completamente gratuitas**

**¡No pagues por este servicio!**

**Protege tu privacidad:** No compartas tus documentos personales. **¡Guatemala sale adelante con la atención y protección consular!**



Ingresa al sitio oficial escaneando el siguiente código QR



Ministerio de  
**Relaciones  
Exteriores**

Síguenos en:



18000 International Blvd, Torre Sur  
Piso 10, Oficina 1005,  
SeaTac, WA. 98188



Ministerio de  
**Relaciones  
Exteriores**

# ¿Conoce a algún niño con asma?

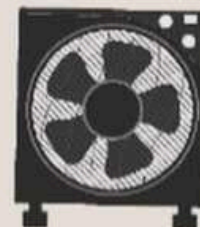
Si están en Georgetown o South Park, este estudio puede ayudarles.



**Contacte a Joseph Santana en [joseph@drcc.org](mailto:joseph@drcc.org) o al 253-235-9148**

Estamos buscando niños/jóvenes de entre 6 y 17 años que padezcan de asma en South Park y Georgetown para examinar como los ventiladores de caja con filtros pueden mejorar el asma.

Los ventiladores de caja con filtros se han utilizado en el pasado como una forma económica de ayudar a capturar los contaminantes que pueden afectar al asma. Este estudio examina qué tanto pueden ayudar estos ventiladores.



Pedimos a los participantes que participen en 4 citas en casa a lo largo de 6 meses. En estas citas se realizarán evaluaciones en el domicilio para prevenir los desencadenantes del asma, así como cuestionarios y pruebas respiratorias.

Este es un estudio hecho en colaboración con el Duwamish River Community Coalition (DRCC) y la Universidad de Washington



No dude en ponerse en contacto con [joseph@drcc.org](mailto:joseph@drcc.org) o al (253) 235-9148

Aprenda más sobre el estudio

## Participantes Reciben

- Un incentivo total de 250 dólares a lo largo de las visitas
- Ventiladores de caja y filtros para sus hogares
- Evaluaciones en el hogar para encontrar desencadenantes del asma
- Monitorización del aire dentro y cerca de su casa para medir la contaminación atmosférica

## Lugares

- South Park
- Georgetown

Siga a DRCC en las redes sociales para obtener más información y actualizaciones de programas y eventos [@drcc\\_org](https://www.drcc.org)



Seattle Department of  
Education & Early Learning

语言协助  
可用的

Asistencia  
de idioma  
disponible



# ¿Necesita ayuda para el cuidado de niños?

 **lo tiene cubierto.**  
CHILD CARE ASSISTANCE PROGRAM

Para registrarse, visite [seattle.gov/CCAP](http://seattle.gov/CCAP) o llame :

 **(206) 386-1050**

¡El Programa de Asistencia de Cuidado Infantil (CCAP) está expandiéndose! Ahora, más familias califican para apoyo financiero para servicios de cuidada de niños.



**Vivir dentro de la ciudad de Seattle**



**Tener un(a) niño(a) de 0 a 12 años de edad**



**Cumplir con los requisitos de ingresos según el tamaño de la familia\***

\*Una familia de 4 que gane menos de \$101,000 podría calificar

Más de  
**235**

proveedores que participan en CCAP

Identifique un proveedor de CCAP que se acomode a su horario y que acepte los cupones de CCAP:

- Proveedores de cuidado infantil en hogares familiares
- Proveedores de cuidado infantil en centros
- Programas para edad escolar antes y después de la escuela

# Community Events

---



## NEIGHBORHOOD MEETING

SEPTEMBER 10, 2024

5:45 PM - 7:30 PM

Currently SPNA meetings are in person at  
Duwamish River Community Hub

8600 14th Ave S  
Seattle, WA 98108

Please, RSVP as dinner will be provided.

Email request  
[SPNAseattle@gmail.com](mailto:SPNAseattle@gmail.com)





SEA MAR  
FIESTAS  
PATRIAS

2024



# South Park PARADE

**Saturday, September 14, 2024**  
**Starting at 10:00 a.m.**

Join us for a fun-filled parade featuring community partners, floats, hot rods, dancers, horses, musical bands and more marching through the heart of South Park!

**Starting Point:**

South Park  
14th Henderson St.  
Seattle, WA 98108

**Ending Point:**

South Park Community Center,  
8319 8th Ave. S.  
Seattle, WA 98108

**Free Youth Boxing Tournament at  
the Sea Mar Community Center  
2:00 p.m.**

9635 Des Moines Memorial Drive S,  
Seattle, WA 98108

[www.seattlefiestaspatrias.org](http://www.seattlefiestaspatrias.org)

   @seamarchc

# UNIFYING OUR COMMUNITIES



**Parade, Music, Food, Health Fair, Festival  
Dancing, Art Exhibition, Zumba® and Children's Activities**

Seattle Center - Festivities	September 14   1:00 p.m. - 9:00 p.m.
	September 15   11:00 a.m. - 6:00 p.m.
South Park - Parade	September 14   10:00 a.m. - 1:00 p.m.

[www.seattlefiestaspatrias.org](http://www.seattlefiestaspatrias.org)




 @seamarchc





**Sea Mar**  
Community Health Centers  
Clínica de la Comunidad  
Exceptional service. Every person. Every time.



## PARADE PARTICIPANT FORM

**South Park, Seattle, WA**  
Saturday, September 14, 2024

Dear Parade Enthusiasts:

### **SEA MAR COMMUNITY HEALTH CENTERS CORDIALLY INVITES YOU TO PARTICIPATE IN OUR ANNUAL FIESTAS PATRIAS PARADE!**

Fiestas Patrias commemorates the independence of Latin American countries, many of which celebrate their national Independence Day in the month of September. In the interest of celebrating Seattle's diversity and inclusion, this celebration is for everyone to enjoy. The event includes a morning parade through the heart of South Park followed by a day filled with Latino culture, food, music, dance, children's activities, and much, much more at the Seattle Center. If you are receiving this invitation for the first time, please join us! If you have joined us in the past, you know how rewarding this experience can be and we look forward to spending time with you again this year.

#### **PARADE INFORMATION:**

This year our Parade will be held on Saturday, September 14, 2024. We will begin staging at the Sea Mar Community Care Center, 1040 S. Henderson St., Seattle, WA 98108. The parade will end at the South Park Community Center located at 8319 8<sup>th</sup> Ave. So. Seattle, WA 98108. More information will be sent to you at a later date.

#### **HOW TO PARTICIPATE:**

To participate, fill out the form enclosed and return it to us by fax, mail or e-mail. There is no fee to join the parade. Our mailing address is:

Sea Mar Community Health Centers  
Attn: Fiestas Patrias Parade  
1040 S. Henderson St.  
Seattle, WA 98108

You can also email this completed form to [parade@seamarchc.org](mailto:parade@seamarchc.org) or fax to 206.763.6574.

If you have any questions about the parade, please call 206.762.3263 and ask for Pablo Barraza although email is the preferred method of initial contact.

Thank you so much for your continued support and participation at the Sea Mar Community Health Centers and in the South Park neighborhood.

Sincerely,

Parade Committee  
Enclosure



**Sea Mar**  
Community Health Centers  
Clínica de la Comunidad  
Exceptional service. Every person. Every time.



**PARADE PARTICIPANT FORM**

**South Park, Seattle, WA**  
Saturday, September 14, 2024

Thank you for your interest in participating in Sea Mar's Fiestas Patrias Parade!

Please complete the following information and return it to the address below. Staging begins at **9:00AM**. **Check in for parade participants begins at 8:00AM and closes at 9:00AM**. Please make time to arrive early. Your location in the parade will be compromised if you do not check in prior to 9:00AM. The official parade begins at 10:00AM. You will be contacted as soon as possible with staging and route information. We will finalize your participation with a confirmation prior to the date of the parade.

<b>Name of Participant/Group</b>	
<b>Address</b>	
<b>Contact Name</b>	
<b>Contact Phone</b>	
<b>Email Address</b>	
<b>Type of Business</b>	

How many people will be participating/representing your group? \_\_\_\_\_

Age range of participants: \_\_\_\_\_

Adults: How Many? \_\_\_\_\_  Children: How Many? \_\_\_\_\_  Seniors: How Many? \_\_\_\_\_

Will you be using a motorized vehicle?  Yes  No If Yes, length? \_\_\_\_\_ ft

Please submit application by <b>Friday, August 23, 2024</b> .	
Submit application to:	<b>If you have any questions or concerns contact:</b>
Sea Mar Community Health Centers Attn: Pablo Barraza <b>Fax: 206.763.6574</b> 1040 S. Henderson St. Seattle, WA 98108	Pablo Barraza <a href="mailto:parade@seamarchc.org">parade@seamarchc.org</a> 206.762.3263
www.seattlefiestaspatrias.org   www.seamar.org	



Next pop-up!!! 🧡 ✨ 🙌🙌



midnightsupplycompany

MARK YOUR CALENDARIOS!

FRIDAY SEPT 6  
AT OUR WAREHOUSE



MIDNIGHT MARKET  
(6-10 PM)

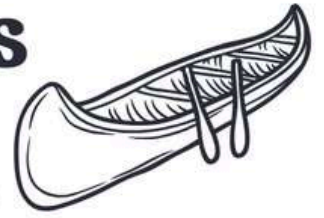
DON'T YOU DARE SHOW UP AT MIDNIGHT 🤪



1521 S 92nd Pl Suite A Seattle, WA 98108



# 2024 River Access Paddle Programs



## Duwamish River Garbage Cleanups:

**March 24**

**April 20**

**June 29**

## Guide

### Trainings:

**May 18 - 19**

**June 1 - 2**

**Sept. 8**

**Sept. 9**



R.A.P.P. works with Duwamish River communities to create more access to the River and Salish Sea, encouraging health, education, and awareness about

Seattle's only river. Support for RAPP was provided by City of Seattle Duwamish River Opportunity Fund, and the Puget Sound Stewardship and Mitigation Fund, a grantmaking fund created by the Puget Soundkeeper Alliance and administered by the Rose Foundation for Communities and the Environment.

## Educational River Tours:

**July 28**

**August 12**

**Sept. 21**



**RSVP**



# princess & bear

W I N E S



**14  
SEP  
2024**

**2-4 pm- French  
Conversation**

**20  
SEP  
2024**

**21  
SEP  
2024**



**7-9 pm**


Steve Hoffman- book talk- In partnership with the Alliance Française de Seattle




**5-7pm**

Music night with Joe Adami

309 SOUTH CLOVERDALE STREET,  
SUITE A1,  
SEATTLE, WA 98108

@princessandbearwinesseattle 

theprincessandthebear.com 

Ph. 206.323.4757

# AFTER-SCHOOL PROGRAMS



Registration is now open for the 2024-2025 school-year!

## ABOUT US

---

Young Women Empowered (Y-WE) provides mentorship-based programs, free of charge, for young women, trans, and gender expansive **youth ages 13-19** in the Greater Seattle area.

## PROGRAMS INCLUDE

---

- Y-WE Create
- Y-WE Write
- Y-WE Grow
- Nature Connections
- Kindred Healing (Black Affinity)
- T-Parties (Centering LGBTQ+)

## SCHEDULE

---

Program dates and times vary, but all take place between **September-June** on evenings and/or weekends. Learn more on our website!

## SIGN UP TODAY!

---

*Registration is free but space is limited. To learn more, visit:*  
**[y-we.org/our-programs](https://y-we.org/our-programs)**



Registration is now open to join Y-WE programs in the 2024-2025 school-year! This year we are excited to offer six unique programs, free to attend for young women and gender expansive youth ages 13-19 in the Seattle area.

More Information at <https://youngwomenempowered.org/>

# Y-WE GROW

FARMING & FOOD JUSTICE  
AT MARRA FARM

Every Saturday  
Sept 14-Oct 19, 9AM-1PM  
9026 4th Ave S

**SIGN UP TODAY  
FOR FALL 2024!**



We are now accepting applications for the Fall 2024 session of Y-WE Grow! Young women and gender expansive youth ages 13-19 are encouraged to sign up. Registration is free and spots will fill up fast, so sign up today!

More Information at <https://youngwomenempowered.org/>

## Immigrant and Refugee Commission



## About Us

The Immigrant and Refugee Commission advises the Mayor and City Council on matters impacting immigrants and refugees living and working in Seattle and supports the City of Seattle's goals of immigrant integration. The Commission is housed in the Office of Immigrant and Refugee Affairs. Unless otherwise noted, the commission meets the second Tuesday of every month from 6:00 - 8:00 PM.

Sep

10

Tue

### Seattle Immigrant and Refugee Commission Monthly Meeting

9/10/2024, 6pm  
Seattle Municipal Tower

<https://www.seattle.gov/immigrant-and-refugee-commission>

# CELEBRATE 30 YEARS OF ECOSS

Sept. 12  
2024  
5-8 p.m.

**tickets available now!**



*food & drinks,  
fundraiser,  
raffle and  
more!*

**Sea Mar Museum  
of Chicano/a  
Latino/a Culture**

9635 Des Moines Memorial Dr  
Seattle, Washington 98108

[tinyurl.com/ecoss30th](https://tinyurl.com/ecoss30th)

YOU'RE INVITED! Celebrate the 30th anniversary with us at our annual fundraiser!

**Save the date for September 12, at 5:00 p.m.** at the Sea Mar Museum of Chicano/a Latino/a Culture. Tickets are available NOW



upcoming event



# Tierra y Tradición

**Celebrating Latino Conservation Week with ECOSS and GSP**

**Saturday Sept. 21st  
10AM-2PM @ Seward Park**

**Join us for habitat restoration, a guided bird walk, scavenger hunt, and art/creative activities. Food will be provided.**

Celebrate Latino Conservation Week. Here we leave you some of the activities we will have for you to enjoy!

Bird Walk / Habitat Restoration / Treasure Hunt / Flower printing and seed ball making. / Lunch / Lottery / Sweepstakes / Lawn Games.

Sign up using the code above.





# Calling Duwamish Valley Youth!

- Are you 13-19 and interested in climate justice?
- Would you like to get involved with your community? Join us!
- Get paid to learn: \$600 stipend!
- Our 10 week program starts Sept 12th
- Email: [dvyc@drcc.org](mailto:dvyc@drcc.org) or scan the QR code to apply!



Calling ALL LOCAL YOUTH !!

Join our Environmental/ Climate Justice Fall cohort.

**Start September 12!!**

More information at [dvyc@drcc.org](mailto:dvyc@drcc.org)



# The Clean Air Program

We aim to reduce air pollution and air toxics in the Duwamish Valley

**Highlight!**  
Revealed new data results for the MOSS Study ->



## Strategy 1

Reduce vehicle emissions in the Duwamish Valley  
*(for example: advocating for electric drayage trucks)*



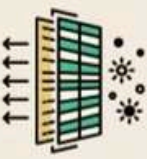
## Strategy 2

Reduce industrial pollution through legal means *(for example: regulating polluting facilities through new permitting laws, like CURB)*



## Strategy 3

Improve indoor air quality in the Duwamish Valley *(for example: air filters in homes and our local elementary school & the DAISY Project)*



## Strategy 4

Improve outdoor air quality through physical and environmental changes *(for example: planting trees, rain gardens)*



## What did we learn with the MOSS Study?

We learned that there are high levels of Lead, Chromium, Cadmium, and Arsenic in moss samples and that air pollution is distributed inequitably in the Duwamish Valley compared to other areas of Seattle. The existing monitoring system may misrepresent neighborhood disparities and toxic particulate matter, so DRCC will continue to push for accurate air monitoring.



Local youth are the experts!

## Why can facilities operate when they are big emitters?

It's because of decades of inequitable practices that placed polluting facilities in our neighborhoods and big businesses who were given permits to pollute by our state government. Under current laws, the process that permits businesses to pollute is not required to consider the effects of our history of environmental racism and the cumulative health risk and burden the most impacted communities face.



## What upcoming air quality studies will happen in the DV as a result of the MOSS Study?

- The DRCC DAISY Project (4 year study, 22 air monitors in the DV)
- Trailer for Researching Environmental Equity (TREE Trailer) at South Seattle College (3 months, September through November, 2024)
- Hexavalent Chromium (Cr-6) follow-up study



## What pollutants are we worried about in the DV?

We are worried about Particulate Matter (PM) like PM 2.5, PM 10, Ultrafine Particulate Matter, and Volatile Organic Compounds and air toxics metals like Lead, Hexavalent Chromium, Aldehydes, Arsenic, and Ozone.





Celebrating **10** years  
of Environmental Justice  
Youth Leadership

The Duwamish River Community Coalition presents :  
**BEER AND CHOCOLATE**

Thursday, October 10th @ 6pm  
Seamar Museum in South Park

FOOD  
DRINKS  
MUSIC  
AWARDS  
COMMUNITY  
AND FUN!!

**Duwamish Valley  
Youth Corps**



<https://www.drcc.org/beer-and-chocolate>

**SAVE THE DATE**

You can't miss it ! Get your ticket NOW  
Food - Drinks - Fun- Dance - Music - Community  
Celebrating 10 years of Environmental Justice Youth Leadership  
<https://www.drcc.org/beer-and-chocolate>



**Seattle**  
Parks & Recreation



# WE ARE HIRING

## *Recreation Division Director*

Work with the Superintendent to set the overall vision for recreation services, facility utilization, and program delivery.

**Apply by 4pm 9/3/2024**



Help us to spread the word! We're hiring for a Recreation Division Director.

**Applications due by 4pm 9/3/24.**

See the job description for complete details and to apply visiting:  
[governmentjobs.com/careers/seattle](https://governmentjobs.com/careers/seattle)

# OPCD Opportunity Now Hiring



We are seeking a Senior Grants Administrator to provide leadership for managing our growing grant portfolio.

More information at:

[governmentjobs.com/careers/seattle/jobs/4621970/senior-grants-administrator](https://governmentjobs.com/careers/seattle/jobs/4621970/senior-grants-administrator)

**Apply by 4:00 p.m. on Tuesday, September 10.**

# Seattle Urban Forestry Commission

**Wildlife Biologist**

**Natural Resource  
Agency or University  
Representative**

**Arborist**

**Landscape Architect,  
ISA Certified**

**Environmental  
Justice  
Representative**

**Public Health  
Representative**

**Seeking Applicants**



Ideal candidates will have experience working with diverse community groups to identify shared priorities and strategies for tree canopy maintenance and expansion.

**Please share with your network and apply by September 12th!**

<https://greenspace.seattle.gov/2024/08/seeking-applicants-for-seattle-urban-forestry-commission/>

# Seattle Police Department

**THERE ARE MANY WAYS  
TO SERVE AND PROTECT  
SEATTLE. FIND YOURS.**

**STARTING SALARIES FROM**  
**\$103K + \$7.5K ENTRY SIGNING BONUS**  
**\$116K + \$30K LATERAL SIGNING BONUS**



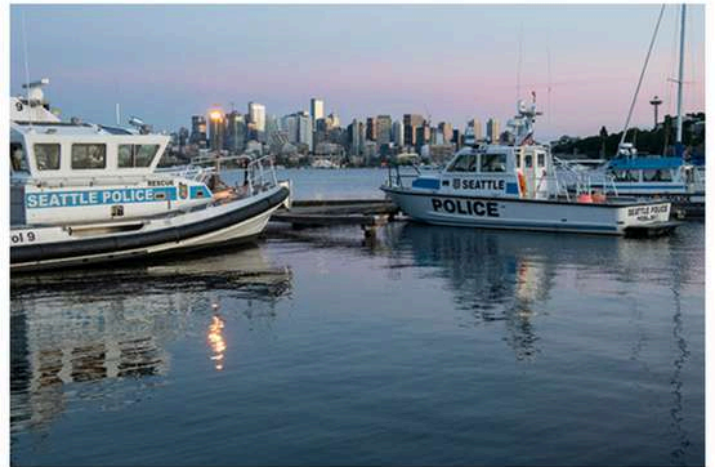
## About our department

The Seattle Police Department is a large metropolitan public safety agency in Washington state. We receive over 800,000 911 calls annually in a city of 84 square miles.

Our patrol division is divided into five neighborhood precincts- North, South, East, West, and Southwest.

Our Harbor Unit patrols 59 square miles of waterways.

We have more specialty units than any other department in the state. Some of our follow-up units include traffic, harbor, mounted patrol, major crimes, crisis response, SWAT, arson and bombs, K9, collaborative (community) policing, forensics, training, and community response group.



Apply on-line:  
**seattlepolicejobs.com**

**Start your career in public service today.**





**Seattle**  
Parks & Recreation

**FALL 2024 PROGRAMS**

# SEATTLE CITYWIDE RECREATION PROGRAMS

## COMMUNITY CENTERS:

### ZONE ONE

DELRIDGE  
HIAWATHA  
HIGH POINT

INT'L DISTRICT/CHINATOWN

JEFFERSON  
RAINIER

RAINIER BEACH  
SOUTH PARK

VAN ASSELT

### ZONE TWO

GARFIELD  
MILLER

MONTLAKE  
NORTHGATE  
QUEEN ANNE

YESLER

### ZONE THREE

BALLARD  
BITTER LAKE  
GREEN LAKE  
LAKE CITY

LAURELHURST  
LOYAL HEIGHTS  
MAGNUSON

MEADOWBROOK  
RAVENNA-ECKSTEIN

### VIRTUAL PROGRAMS

ENVIRONMENTAL LEARNING










**REGISTER ONLINE:**

[https://bit.ly/spr\\_activity\\_reg](https://bit.ly/spr_activity_reg)



# Discounted Seattle Electric SCOOTER & BIKE SHARE

Sign up for discounted rides with proof of enrollment in a qualifying program

 <b>Access these scooters and bikes with an app on your smartphone</b>		<b>Discounted Sign-Up Links</b>	<b>Website</b>
	<b>Bike and Scooter</b> \$0.75 to unlock, \$.01 per minute of riding.		
	<b>Bike and Scooter</b> \$0.75 to unlock, \$.01 per minute of riding.		



**If you need assistance or would like more information, please call or email us, or visit our website!**

Phone: (206) 375-2344 | Email: [ScooterShare@seattle.gov](mailto:ScooterShare@seattle.gov)  
 Website: [seattle.gov/ScooterShare](http://seattle.gov/ScooterShare)



**Seattle**  
 Department of  
 Transportation

# Plant a Tree, Grow Seattle's Urban Forest!

Receive up to 3 free trees to plant in your yard or along the street with the

**Trees for  
Neighborhoods  
program**

**Apply for  
your free  
tree today!**

*Application open*



[seattle.gov/trees/trees-for-neighborhoods](https://seattle.gov/trees/trees-for-neighborhoods)

# Celebration in South Park

Monday, September 16th, 2024

12:00 PM - 4:00 PM

South Park Pump Station  
640 S Riverside Dr, Seattle, WA 98108



"Join us in celebrating the achievements and partnerships within the Duwamish Valley community. This event is free and open to everyone!"

There will be updates from the City of Seattle staff.

FREE FOOD!



Seattle Office of  
Sustainability &  
Environment

Support  
women  
farmers!



Join our Community Shared Agriculture!

# Fresh organic produce boxes

Enjoy 18 weeks of fresh vegetables grown in South Park



Subscribe for  
**\$40 Weekly**

Starts: June 18 - Finish: October 15, 2024

Pick up every **Tuesday!** 3:00 PM - 5:00 PM

at 9026 4th Ave S, Seattle, WA 98108



Salsa de la Vida is a women-led Villa Comunitaria program

Register here!



For more information:

(206)-496-2697

diana@villacomunitaria.org



SALSADELAVIDA

Let's Celebrate!!!



# GATEWAY PARK NORTH

7698 8th Ave. S. Georgetown

JOIN US FOR A CELEBRATION OF GEORGETOWN'S ONLY WATERFRONT PARK. LET'S HONOR THE LAND OVER DOPE ART, BEAUTIFUL COMMUNITY AND GOOD FOOD!



COMMUNITY MUSIC CIRCLE



GREEN JOBS INFO



PARK HISTORY TOUR



PARK ART PROJECT



FREE FOOD & DRINKS

**SUN SEPT 7TH**

**12:30 - 4:00**



@dvpcat



portseattle.org/pcat

¡Celebración! Gateway Park North

Ven a celebrar el único parque de Georgetown con costa. ¡Honremos la tierra por sobre el arte, nuestra hermosa comunidad y nuestra deliciosa comida!

Cuándo: Domingo 7 de Septiembre, de 12:30 a 16:00 horas

Ubicación: Gateway Park North 7698 8th Ave. S Georgetown



# Citywide Youth Advisory Council



## Seattle Teens, 13-19 yo

We're looking for teens to:

- Start a brand new advisory council
- Enhance teen programs in Seattle
- Find solutions to issues impacting youth in our communities
- Learn, grow, and gain experience

**Join with a friend!**  
\$600 stipend, food, and gift cards

Apply Here!



**ASSOCIATED RECREATION COUNCIL**



**Seattle Parks & Recreation**

Scan the QR code or text (206) 265-1378 for a link to apply

# THE MUSEUM OF FLIGHT



## Aviation Learning Center

The Aviation Learning Center (ALC) brings to life the energy and excitement of flight through a hands-on learning experience.

- Grades 4+
- 75-minutes - 2 hour
- \$300-\$500



## Challenger Learning Center

Students transform into astronauts, scientists and engineers with a single common purpose – the success of the mission!

- Grades 6+
- 2 hour
- \$500

## Financial Assistance Available

[museumofflight.org/education/educator-resources/grant-assistance](http://museumofflight.org/education/educator-resources/grant-assistance)



**The Museum of Flight**  
9404 E. Marginal Way South  
Seattle, WA 98108-4097

## Museum Hours

Open Daily | 10AM - 5 PM

206-764-5700

[info@museumofflight.org](mailto:info@museumofflight.org)





Seattle Department of Education & Early Learning

语言协助  
可用的

Language  
assistance  
available!



# Need help paying for child care?

 **CCAP** has you covered.  
CHILD CARE ASSISTANCE PROGRAM

Check your eligibility at [seattle.gov/CCAP](http://seattle.gov/CCAP) or call:

 **(206) 386-1050**

The City of Seattle's **Child Care Assistance Program** has expanded! More families are now eligible for financial support to cover the costs of child care.



**Live within  
Seattle city  
limits**



**Have a child  
age 0-12  
years old**



**Meet income  
eligibility based  
on family size \***

\*A family of four earning up to \$101 K per year may qualify!

More than

**235**

participating  
providers  
citywide!

Choose a provider who works with your schedule and accepts CCAP vouchers:

- Center-based child care providers
- Home-based Family Child Care providers
- Before- and after-school programs



**SOUTH PARK  
SeniorCenter**

8201 10th Ave S, Suite 4  
SEATTLE WA 98108-4449

Phone: (206) 767-2544

<https://www.spseniors.org/>  
**Instagram @wa.spsc**



MON	TUE	WED	THU	FRI	SAT
<p><b>2</b></p> <p>3:00 PM - 4:00 PM EnhanceFitness with Cindy House</p> <p>6:00 PM - 8:00 PM 📅 Cultural Dancing— Shining Night Dancing</p>	<p><b>3</b></p> <p>8:30 AM - 4:30 PM 📅 Social Services Community Connection</p>	<p><b>4</b></p> <p>3:00 PM - 4:00 PM EnhanceFitness with Cindy House</p> <p>6:00 PM - 8:00 PM 📅 Lotería y BINGO</p>	<p><b>5</b></p>	<p><b>6</b></p> <p>3:00 PM - 4:00 PM EnhanceFitness with Cindy House</p> <p>6:00 PM - 8:00 PM 📅 Karaoke</p>	<p><b>7</b></p>
<p><b>9</b></p> <p>3:00 PM - 4:00 PM EnhanceFitness with Cindy House</p> <p>6:00 PM - 8:00 PM 📅 Cultural Dancing— Shining Night Dancing</p>	<p><b>10</b></p> <p>8:30 AM - 4:30 PM 📅 Social Services Community Connection</p>	<p><b>11</b></p> <p>3:00 PM - 4:00 PM EnhanceFitness with Cindy House</p> <p>6:00 PM - 8:00 PM 📅 Game Club</p> <p>6:00 PM - 7:00 PM 📅 Zumba</p>	<p><b>12</b></p>	<p><b>13</b></p> <p>3:00 PM - 4:00 PM EnhanceFitness with Cindy House</p> <p>6:00 PM - 8:00 PM 📅 Karaoke</p>	<p><b>14</b></p>
<p><b>16</b></p> <p>3:00 PM - 4:00 PM EnhanceFitness with Cindy House</p> <p>6:00 PM - 8:00 PM 📅 Cultural Dancing— Shining Night Dancing</p>	<p><b>17</b></p> <p>8:30 AM - 4:30 PM 📅 Social Services Community Connection</p>	<p><b>18</b></p> <p>3:00 PM - 4:00 PM EnhanceFitness with Cindy House</p> <p>4:00 PM - 6:00 PM 📅 Book Club</p> <p>6:00 PM - 8:00 PM 📅 Lotería y BINGO</p>	<p><b>19</b></p>	<p><b>20</b></p> <p>3:00 PM - 4:00 PM EnhanceFitness with Cindy House</p> <p>6:00 PM - 8:00 PM 📅 Karaoke</p>	<p><b>21</b></p>
<p><b>23</b></p> <p>3:00 PM - 4:00 PM EnhanceFitness with Cindy House</p> <p>6:00 PM - 8:00 PM 📅 Cultural Dancing— Shining Night Dancing</p>	<p><b>24</b></p> <p>8:30 AM - 4:30 PM 📅 Social Services Community Connection</p>	<p><b>25</b></p> <p>3:00 PM - 4:00 PM EnhanceFitness with Cindy House</p> <p>6:00 PM - 7:00 PM 📅 Zumba</p>	<p><b>26</b></p>	<p><b>27</b></p> <p>3:00 PM - 4:00 PM EnhanceFitness with Cindy House</p> <p>6:00 PM - 8:00 PM 📅 Karaoke</p>	<p><b>28</b></p>
					<p><b>29</b></p>



# PLAY STREET EVENT

for community elders!

**Date:** Tuesday, September 24th

**Time:** 10am - 1pm

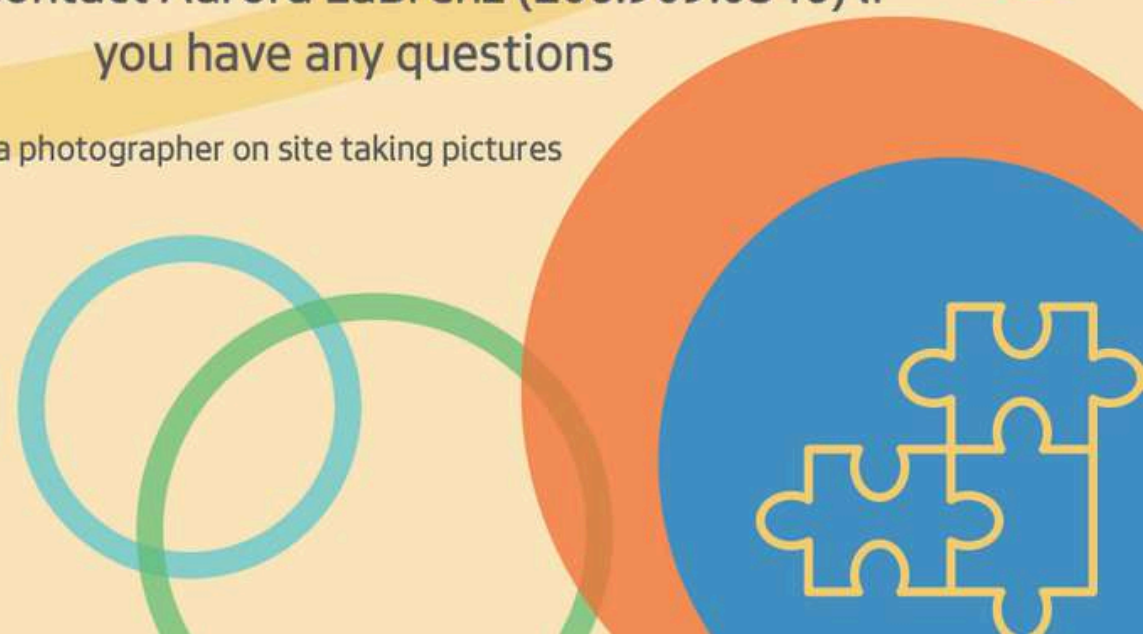
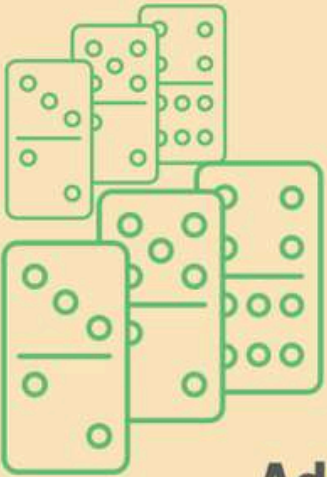
**Address:** 8201 10th Ave S, Seattle, WA 98108

The fun includes games, chair yoga, salsa dancing, and more. Featuring DJ Tremenda Diosa. Light refreshments will be available.

All community elders are welcome!

Please contact Aurora LaBrenz (206.909.0346) if you have any questions

\*There will be a photographer on site taking pictures





student success



# Homework Help

at The Seattle Public Library

.....

We can help students succeed in school.

Our trained Homework Help tutors can assist with school assignments, provide reading support and skill-building activities at select Library locations.

Students in Seattle can also get free virtual tutoring from Tutor.com with a Library card or a Library Link number - [www.spl.org/VirtualTutoring](http://www.spl.org/VirtualTutoring)

Branch	Days	Times
High Point Branch 3411 S.W. Raymond St.	Mondays Tuesdays Wednesdays	4 - 5:45 p.m. 4 - 5:45 p.m. 4 - 7:30 p.m.
South Park Branch 8604 Eighth Ave. S.	Wednesdays	3:30 - 5:30 p.m.

Starting the week of September 16th!



**GAMES**



**FUN**



**THURSDAYS  
4-6PM**



- **SEPTEMBER 19TH**
- **OCTOBER 17TH**
- **NOVEMBER 14TH**
- **DECEMBER 12TH**

**SNACKS**



**CRAFTS**



**AT SOUTH PARK BRANCH LIBRARY  
8604 8TH AVE S**

**Let's GO!**





# story time

& more

Starts  
9/10



**Join our children's librarian for story time!  
There will be stories, rhymes, and fun early  
literacy activities for children and their  
caregivers.**

## **Preschool Story Time**

**South Park Branch**

**Tuesdays 6:30 PM**

**This event is in Spanish**

*We can provide accommodations for people with disabilities at Library events. Please ask staff for more information.*

**8604 8<sup>th</sup> Ave S [www.spl.org](http://www.spl.org) | 206-615-1688**

The main intention of creating this newsletter it's to inform, share, and connect with every person who works, lives, and does business in South Park, and share it with other neighborhoods, and cities to create better foot traffic to support our local economy.

If you have or know of any events for the coming months, please share it with us.

We will do our best to highly new businesses every edition. If you know a new business that it's not listed under the website directory, please let us know as well.

Your feedback will be very appreciated.

Greetings,

Only In South Park Team

hello@onlyinsouthpark.org

Follow us on IG @OnlyInSouthPark



**OnlyInSouthPark.org**

hello@onlyinsouthpark.org

  @onlyinsouthpark



**Seattle** Office of  
Economic Development  
Only in Seattle